



Control Panel

The gen-set control panel was designed to include, in one single panel, the switches, control devices and the protection devices. The components are the following :

- Engine cut-off module for automatic stop of engine in case of high water temperature, low oil pressure, high alternator temperature.
- Hour-meter.
- Start-stop button.
- Breaker for protection against of overload or short circuit.
- Thermal switch.

Engine

- Easy access in case of maintenance to the feeding system and lubrication, of the sea/water pump and the air filter.
- Safety stop in case of low oil pressure.
- Safety stop in case high water/exhaust gas temperature.
- Double vibration dumping system.
- Oil and fuel filters of easy access.
- Oil drain pump.

Alternator

- Synchronous, 4 poles, brush less self-excited, electronic voltage regulator (AVR)
- Rotor and stator epoxy resin coated against external agents.
- Rotor dynamically balanced.
- Insulation class H.

Soundproof cabin

A new project engineering design with a structure of a draw piece of aluminum supporting, painted aluminum panels type 5754 of high resistance to external agents.

Of limited weight and easy accessibility to the inner cabin in case of maintenance services.

Engine

	50 Hz	60 Hz
Model	Yanmar 4TNE94A	
Type	Diesel 4 stroke	
Cylinders (nr.)	4	
Cylinder block material	Cast iron	
Bore (mm. - in.)	94 - 3.7	
Stroke (mm. - in.)	100 - 3.9	
Displacement (cc. - CID)	2776 - 169.4	
Power (hp)	39	46.4
RPM	1500	1800
Compression ratio	18:1	
Combustion system	Direct injection	
Engine head material	Cast iron	
Speed governor	Centrifugal mechanical	
Lubrication system	Forced	
Oil sump capacity with filter(l -gl)	10.2 - 2.24	
Engine stop system	Stop solenoid	
Fuel pump	Mechanical	
Fuel pump discharge (cm. - ft)	80 - 2.62	
Fuel consumption (l/h - gl/h)	7.2 - 1.58	8,4 - 1.84
Air intake (m ³ /min)	12	15
Starting battery (Ah-V)	80 - 12	
Battery charger (Ah-V)	40 - 12	
Starter (KW-V)	2.3 - 12	
Max. inclination	30°	
Water pump flow (l/min. - gl/min.)	40 - 8.8	

Alternator

	50 Hz	60 Hz
Type	Synchronous, 4-poles, brush less self-excited electronic voltage regulation (AVR)	
Cooling	Air/water (Intercooler W/A)	
Voltage (V)	230 - 115	120 - 240
Frequency (Hz)	50	60
Amps	216 - 108	240 - 120
Power factor (cos ø)	1	
Max. power (Kw)	25	29
Continuous power (kw)	22.4	26.4
Insulating class	H	
Voltage stability	±2%	
Frequency stability	±5%	

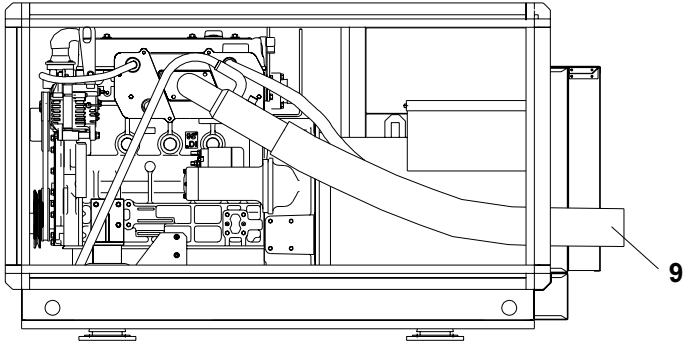
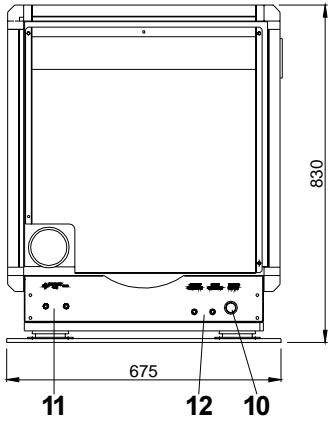
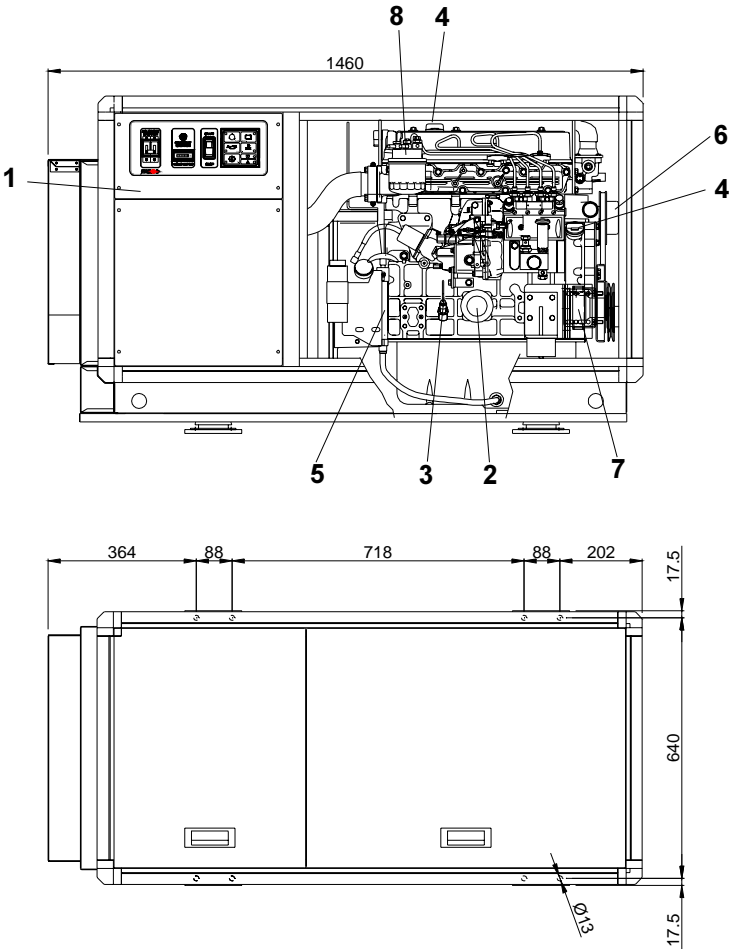
Cooling system

The cooling of the engine is based on a closed inner flow of coolant.

The system is based on a heat exchanger seawater/coolant type, where the thermal exchange occurs between the two liquids.

Two separate pumps contribute to the flow of the coolant and the sea water.

	50 Hz	60 Hz
Dimension (Length x Width x Height.)	1460x675x830mm - 57.4x26.5x32.7 (in.) (with soundproof box)	
Weight	490 Kg. - 1133 (lb) (with soundproof box)	
Noise Level	56 dB _A at 7mt (23 ft)	58 dB _A at 7mt (23 ft)



- 1- Control panel
- 2 - Oil filter cartridge
- 3 - Oil filler
- 4 - Engine oil hub
- 5 - Oil drain pump
- 6 - Fresh water pump

- 7 - Sea water pump
- 8 - Fuel filter
- 9 - Exhaust manifold (ø 80mm)
- 10 - Sea water intake (ø 25mm)
- 11 - Battery connections
- 12 - Fuel tank connections

FITTINGS

EXHAUST COMPONENTS KIT

SIPHON BREAK

W.G. SEPARATOR KIT

REMOTE CONTROL PANEL COMPLETE OF INSTRUMENTS

*This drawing is only a reference and is indicatly for the installation. For more information, you may contact your local dealer or **mase** generators S.p.A..*

mase generators S.p.A. reserves the right to change the design or specifications without notice and without any obligations or liability whatsoever. For more information, you may contact your local **mase** dealer.

Allocation:



MASE GENERATORS S.p.A. Via Tortona, 345
47023 Cesena (FC) Italy
Tel. +39-0547-354311 Fax. +39-0547-317555
Email : mase@masegenerators.com
www : masegenerators.com